

Mail.XML Version 26.2

System Messages Specification

Monday, September 11, 2023

Working Group Chair

Shawn Baldwin, BCC Software

Technical Director

Shariq Mirza, DTAC Associate, Assurety Consulting & Solutions

Editor

Shariq Mirza, DTAC Associate, Assurety Consulting & Solutions

Copyright (c) 2023 – Delivery Technology Advocacy Council (“DTAC ”). All Rights Reserved.

Mail.dat is a registered trademark of DTAC

Mail.XML is a trademark of DTAC



Copyright and Legal Notices

© 2023 Delivery Technology Advocacy Council. All Rights Reserved.

Copyright 2023 – Delivery Technology Advocacy Council (“DTAC”) is the “Copyright Owner” of “Mail.XML®”. All rights reserved by the Copyright Owner under the laws of the United States, Belgium, the European Economic Community, and all states, domestic and foreign. This document may be downloaded and copied provided that all copies retain and display the copyright and any other proprietary notices contained in this document. This document may not be sold, modified, edited, or taken out of context such that it creates a false or misleading statement or impression as to the purpose or use of the Mail.XML® specification, which is an open standard. Use of this Standard, in accord with the foregoing limited permission, shall not create for the user any rights in or to the copyright, which rights are exclusively reserved to the Copyright Owner.

DTAC and the members of the Mail.XML® Specifications - Committee (collectively and individually, "Presenters") make no representations or warranties, express or implied, including, but not limited to, warranties of merchantability, fitness, for a particular purpose, title, or non-infringement. The presenters do not make any representation or warranty that the contents of this document are free from error, suitable for any purpose of any user, or that implementation of such contents will not infringe any third-party patents, copyrights, trademarks or other rights. By making use of this document, the user assumes all risks and waives all claims against Presenters.

In no event shall Presenters be liable to user (or other person) for direct, indirect, special or consequential damages arising from or related to any use of this document, including, without limitation, lost profits, business interruption, loss of programs, or other data on your information handling system even if Presenters are expressly advised of the possibility of such damages.

Some states do not allow the disclaimer or limitation of damages, so the disclaimers set forth above apply to the maximum extent permitted under applicable law.

Abstract

This document describes the messaging protocol for use by mailers and their consignees. The Mail.XML™ Transaction Protocol defines the roles and responsibilities of Shippers and Consignees and defines the format and method for message exchange. This messaging protocol is designed to be XML and Web-Services compliant.

Mail.XML and Mail.dat are trademarks of DTAC.

About Mail.XML™

Mail.XML™ is bringing a paradigm change to the industry by increasing business function specific B2B (Business to Business) communication within the industry that supports automation and in the end enables cost avoidance and higher profits through improved competence and effectiveness of communication. Mail.XML is designed to increase efficiency and lower costs by removing many manual data entry processes and enabling quick near real time communication between business partners. Mail.XML currently supports container-based scheduling, pick up and drop off business processes, as well as identifying different business entities responsible for performing different services such as quality of mailing, address correction, and delivery confirmation on a mailing. The core focus of Mail.XML is communication between industry members and from industry to the final mail processing and delivery organization that delivers the mail to the end consumer, e.g., USPS. In the next few versions of Mail.XML the focus moves across mailing supply chain channels, and includes advanced functions such as payment; automated verification; enabling first, second, and third-party communication and incorporating presort planning, printing, and distribution processes.

What's New in Mail.XML Version 26.2?

With this release, the Mail.XML Messaging Protocol moves to Version 26.2. This release supports structure changes required by mailing industry and Postal Service.

Changes supported by Mail.XML 26.2 include:

- CR 2615 - Updating characteristicIncentiveType and adding FG for First-Class Growth Incentive Credit Redemption
- CR 2616 - Updating characteristicIncentiveType and adding MG for USPS Marketing Mail Growth Incentive Credit Redemption
- CR 2617 - Updating containerLevelType, and adding AU for Protected Mixed ADC and AV for Protected Mixed NDC

About Mail.XML Schema Modularization

Today Mail.XML messages are grouped into 8 message types.

- Transportation Messages (TM)
- Mailing Messages (MM)
- Data Distribution Messages (DD)
- Dynamic Payment Template Messages
- Identification Messages (ID)
- Supply Chain Messages (SC)
- Informed Visibility (IV)
- System Messages
- Base: Shared simple types
- Definitions: Shared complex types and elements

The simple types shared across 2 or more modules are found in the Base schema. Likewise, the shared definitions module contains complex type definitions and elements that are shared across 2 or more modules.

Mail.XML Module Versioning Rules

The following versioning rules will be followed:

The Mail.XML wrapper schema**(.xsd) will always be given the next higher version number (or Errata designation) when any update is made to base, defs or any module. The name of the .xsd file will indicate the new version and the new version number will be used in the namespace and target declarations:
xmlns:mailxml="http://delivery-tech.org/Specs/mailxml26.2/mailxml"
targetNamespace="http://delivery-tech.org/Specs/mailxml26.2/mailxml"

- When updates are made, only those modules that are updated will be given the next higher version number (or Errata letter designation).
- If updates are made to the base or defs, then the base and defs xsds will be given the next higher version number (or Errata designation) and all modules that call to them will also be given the next higher version number (or Errata designation).

For example:

- If the wrapper version is labeled as xmlns:mailxml="http://deliverytech.org/Specs/mailxml26.2A/mailxml" then at least one of the XSDs is at same version such as filename ='Mail.XML_26.2A.xsd' <- Errata A
- If the wrapper version is labeled as xmlns:mailxml="http://deliverytech.org/Specs/mailxml26.2B/mailxml" then at least one of the XSDs is at same version such as filename ='Mail.XML_26.2B.xsd' <- Errata B

- If the wrapper version is labeled as xmlns:mailxml="http://deliverytech.org/Specs/mailxml26.2/mailxml" then at least one of the XSDs is at same version such as filename = 'Mail.XML_26.2.xsd' <- Major Version

Mail.XML 26.2 XSD Modules

The following Mail.XML XSD modules/namespaces are used:

- Mail.XML_tm.xsd: This module contains all the transportation (or FAST) messages and the attributes, elements and complex types that are unique to these messages. Namespace=Mail.XML_tm:
- Mail.XML_mm.xsd: This module contains all the mailing messages (eDoc) and the attributes, elements and complex types that are unique to these messages. Namespace=Mail.XML_mm:
- Mail.XML_iv.xsd: This module contains informed visibility messages and the attributes, elements and complex types that are unique to these messages. Namespace=Mail.XML_iv:
- Mail.XML_dd.xsd: This module contains all the data distribution messages and the attributes, elements and complex types that are unique to these messages. Namespace=Mail.XML_dd:
- Mail.XML_id.xsd: This module contains all the identification messages and the attributes, elements and complex types that are unique to these messages. Namespace=Mail.XML_id:
- Mail.XML_sc.xsd: This module contains all the supply chain messages and the attributes, elements and complex types that are unique to these messages. Namespace=Mail.XML_sc:
- Mail.XML_defs.xsd: This module contains all the common definitions of attributes, elements and complex types that are used across two or more message types. Namespace=Mail.XML_defs:
- Mail.XML_base.xsd: This module contains simple types that are shared across two or more modules that make up Mail.XML. These can be considered a building block for any message group. Namespace=Mail.XML_base:
- Mail.XML.xsd: This module contains the system messages of Mail.XML and is used to build custom profiles for Mail.XML. Namespace=Mail.XML:

The Mail.XML™ 26.2 Messaging Documentation Set

The Mail.XML Messaging Specification has been organized into a set of documents. This *Schemas Specification* is one document in a set of documents that make up the Mail.XML Specification 26.2. Updates in this Specification are NOT backwardly compatible with previous versions. Other documents in the specification set include:

- Mail.XML™ 26.2: Transportation Messaging Specification documents all transportation messages
- Mail.XML™ 26.2: Mailing Messaging Specification documents all mailing messages
- Mail.XML™ 26.2: Informed Visibility Specification documents all informed visibility messages
- Mail.XML™ 26.2: Data Distribution Messaging Specification documents all data distribution messages
- Mail.XML™ 26.2: Identification Messaging Specification documents all identification messages
- Mail.XML™ 26.2: Supply Chain Messaging Specification documents all supply chain messages
- Mail.XML™ 26.2: System Messaging Specification documents all systems and fault messages
- Mail.XML™ 26.2: Simple Types Specification documents all simple types used across Mail.XML messages

- Mail.XML™ 26.2: Common Definitions Specification documents all shared elements and complex
- types.
- Mail.XML™ 26.2: Schemas contains the .XSDs that make up the Mail.XML Messaging Specification

Table of Contents

Abstract	3
About Mail.XML™	3
What's New in Mail.XML Version 26.2?	3
About Mail.XML Schema Modularization	4
Mail.XML Module Versioning Rules	4
Mail.XML 26.2 XSD Modules	5
The Mail.XML™ 26.2 Messaging Documentation Set	5
Schema mailxml_id_26.2.xsd	8

Schema mailxml_id_26.2.xsd

schema location: C:\Users\NabilRahman\Desktop\XML SCHEMA UPDATE\26.2\Mail.XML_26.2\MailXML_26.2\XSDs\mailxml_id_26.2.xsd
attributeFormDefault: **qualified**
elementFormDefault: **qualified**
targetNamespace: **http://delivery-tech.org/Specs/mailxml26.2/mailxml_id**

Elements

[CastofCharactersCancelRequest](#)
[CastofCharactersCancelResponse](#)
[CastofCharactersCreateRequest](#)
[CastofCharactersCreateResponse](#)
[CastofCharactersUpdateRequest](#)
[CastofCharactersUpdateResponse](#)
[CustomerRelationIdentifyQueryRequest](#)
[CustomerRelationIdentifyQueryResponse](#)
[CustomerRelationIdentifyUpdateRequest](#)
[CustomerRelationIdentifyUpdateResponse](#)
[IncentiveEnrollmentCreateRequest](#)
[IncentiveEnrollmentCreateResponse](#)
[USPSCRIDCreateValidateRequest](#)
[USPSCRIDCreateValidateResponse](#)
[USPSMIDCreateValidateRequest](#)
[USPSMIDCreateValidateResponse](#)

Complex types

[CofCCreateAcceptType](#)
[CofCCreateRejectType](#)
[cridCreateResponseType](#)
[CRIDEntryType](#)
[cridQueryResponseType](#)
[cRIDsRequestedType](#)
[cridValidateResponseType](#)
[customerIdentityType](#)
[groupContainerIDType](#)
[IncentiveEnrollmentEntryType](#)
[legalAcknowledgementBlockCRIDType](#)
[legalAcknowledgementBlockMIDType](#)
[legalAcknowledgementBlockMSPSType](#)
[mailPieceGroupCreateType](#)
[mailPieceGroupResponseType](#)
[midCreateResponseType](#)
[midEntryType](#)
[midQueryResponseType](#)
[midValidateResponseType](#)

Simple types

[MIDorCRIDRequestType](#)

element **CastofCharactersCancelRequest**

<p>diagram</p>	<p>CastofCharactersCancelRequest</p> <p>Message requesting the cancellation of unique identification the various roles for parties within the industry for a list to enable information access and sharing between USPS and multiple mailers.</p> <p>attributes</p> <ul style="list-style-type: none"> grp mailxml_defs:MailXMLHe... <ul style="list-style-type: none"> mailxml_defs:CustomerGroupID mailxml_defs:MailingGroupID mailxml_defs:MaildatJobID mailxml_defs:UserLicenseCode <p>mailxml_id:SubmittingParty</p> <p>mailxml_id:SubmittingSoftware</p> <p>mailxml_id:SubmitterTrackingID</p> <p>1..∞</p> <p>mailxml_id:Participant</p> <p>mailxml_id:Role</p> <p>1..∞</p> <p>mailxml_id:UserLicenseCode</p> <p>mailxml_id:MaildatJobID</p> <p>mailxml_id:CustomerGroupID</p> <p>mailxml_id:MailingGroupID</p> <p>mailxml_id:MailPieceGroup</p> <p>1..∞</p> <p>mailxml_id:ContainerGroup</p> <p>1..∞</p> <p>mailxml_id:EffectiveDate</p> <p>mailxml_id:ExpirationDate</p> <p>mailxml_id:Duration</p> <p>mailxml_id:DurationUnitofMeas...</p>
<p>namespace</p>	<p>http://delivery-tech.org/Specs/mailxml26.2/mailxml_id</p>
<p>annotation</p>	<p>documentation</p> <p>Message requesting the cancellation of unique identification the various roles for parties within the industry for a list to enable information access and sharing between USPS and multiple mailers.</p>

element **CastofCharactersCancelResponse**

diagram	<p>The diagram illustrates the structure of the CastofCharactersCancelResponse element. It begins with a sequence container (rectangle with a small square on the right) containing the element CastofCharactersCancelRespon.... This is followed by another sequence container containing a choice element (octagon with a dashed line). This choice element has two branches: one leading to a sequence container with mailxml_id:TrackingID and another leading to a sequence container with mailxml_id:SubmitterTrackingID. Finally, there is a choice element (octagon with a solid line) that branches into two sequence containers, each containing mailxml_id:CastofCharactersCa....</p>
namespace	http://delivery-tech.org/Specs/mailxml26.2/mailxml_id
annotation	<p>documentation</p> <p>Response to a message requesting the cancellation of unique identification the various roles for parties within the industry.</p>

element **CastofCharactersCreateRequest**

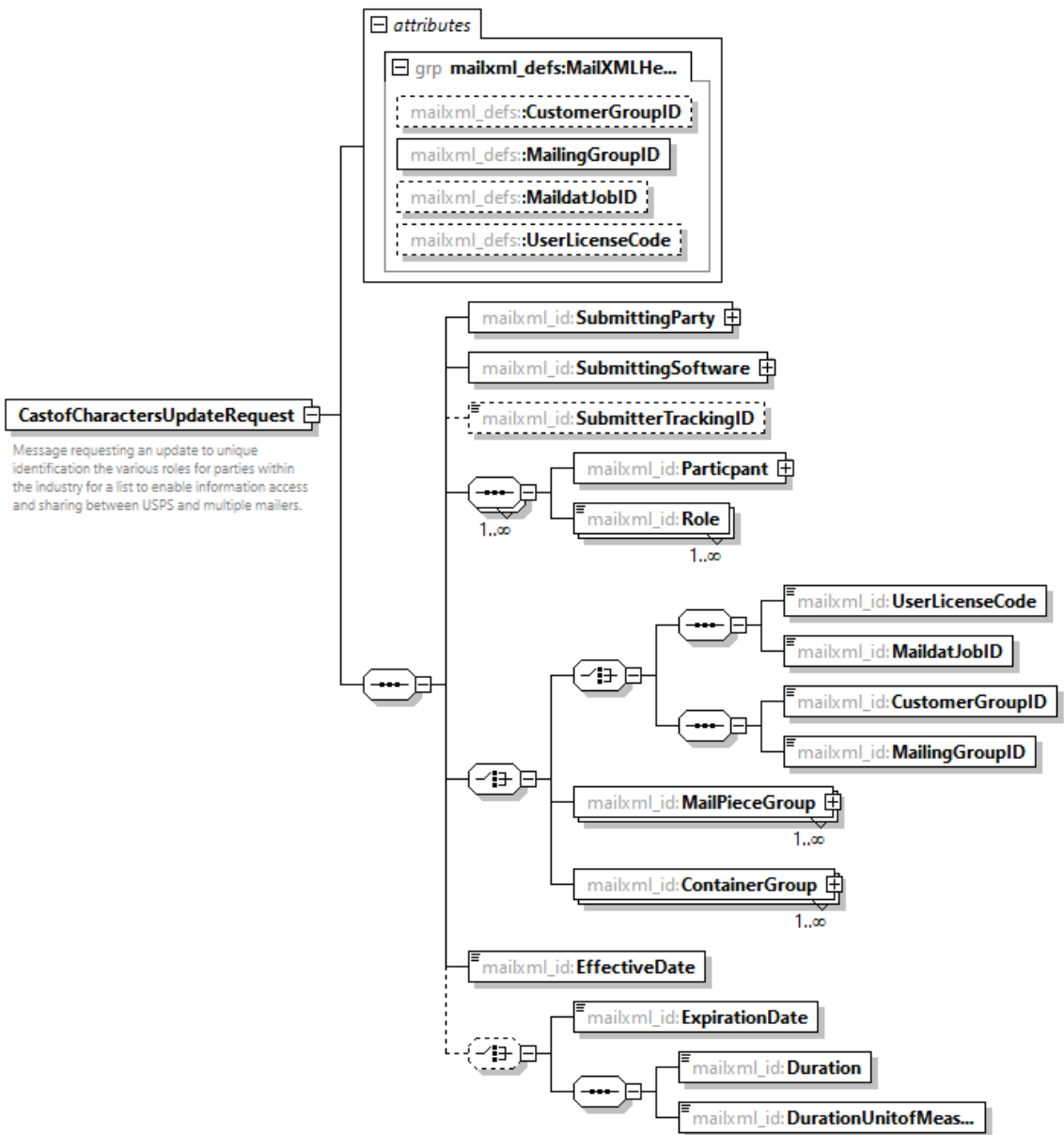
<p>diagram</p>	<p>CastofCharactersCreateRequest</p> <p>Message requesting the creation of unique identification the various roles for parties within the industry for a list to enable information access and sharing between USPS and multiple mailers.</p> <p>Attributes:</p> <ul style="list-style-type: none"> grp mailxml_defs:MailXMLHe... mailxml_defs:CustomerGroupID mailxml_defs:MailingGroupID mailxml_defs:MaildatJobID mailxml_defs:UserLicenseCode <p>Elements:</p> <ul style="list-style-type: none"> mailxml_id:SubmittingParty mailxml_id:SubmittingSoftware mailxml_id:SubmitterTrackingID mailxml_id:Participant (1..∞) mailxml_id:Role (1..∞) mailxml_id:UserLicenseCode (1..∞) mailxml_id:MaildatJobID (1..∞) mailxml_id:CustomerGroupID (1..∞) mailxml_id:MailingGroupID (1..∞) mailxml_id:MailPieceGroup (1..∞) mailxml_id:ContainerGroup (1..∞) mailxml_id:EffectiveDate mailxml_id:ExpirationDate (1..∞) mailxml_id:Duration (1..∞) mailxml_id:DurationUnitofMeas... (1..∞)
<p>namespace</p>	<p>http://delivery-tech.org/Specs/mailxml26.2/mailxml_id</p>
<p>annotation</p>	<p>documentation</p> <p>Message requesting the creation of unique identification the various roles for parties within the industry for a list to enable information access and sharing between USPS and multiple mailers.</p>

element **CastofCharactersCreateResponse**

<p>diagram</p>	
<p>namespace</p>	<p>http://delivery-tech.org/Specs/mailxml26.2/mailxml_id</p>
<p>annotation</p>	<p>documentation Response to a message requesting the creation of unique identification the various roles for parties within the industry.</p>

element **CastofCharactersUpdateRequest**

diagram



namespace http://delivery-tech.org/Specs/mailxml26.2/mailxml_id

annotation
documentation
Message requesting an update to unique identification the various roles for parties within the industry for a list to enable information access and sharing between USPS and multiple mailers.

element **CastofCharactersUpdateResponse**

diagram	<p>The diagram shows the structure of the CastofCharactersUpdateResponse element. It is a container element with a description: "Response to a message requesting an update to unique identification the various roles for parties within the industry." The element is connected to a choice connector (a circle with three dots). This choice connector has two branches: one leading to a sequence connector (a circle with a plus sign) and another leading to a choice connector (a circle with a plus sign). The sequence connector leads to two elements: mailxml_id:TrackingID and mailxml_id:SubmitterTrackingID. The choice connector leads to two elements: mailxml_id:CastofCharactersUp... and mailxml_id:CastofCharactersUp....</p>
namespace	http://delivery-tech.org/Specs/mailxml26.2/mailxml_id
annotation	<p>documentation</p> <p>Response to a message requesting an update to unique identification the various roles for parties within the industry.</p>

element **CustomerRelationIdentifyQueryRequest**

diagram	<p>The diagram shows the structure of the CustomerRelationIdentifyQueryRequest element. It is a container element with a description: "Query request for mail piece customer identifiers." The element is connected to a choice connector (a circle with three dots). This choice connector has two branches: one leading to a sequence connector (a circle with a plus sign) and another leading to a choice connector (a circle with a plus sign). The sequence connector leads to a group element labeled attributes. The attributes group contains a sequence connector (a circle with a plus sign) leading to a group element labeled grp mailxml_id:CRQueryRequ.... This group contains six elements: mailxml_id:MaildatJobID, mailxml_id:MPUID, mailxml_id:SegmentID, mailxml_id:ComponentID, mailxml_id:LinktoMaildatSumm..., and mailxml_id:LinktoMaildatSumm.... The choice connector leads to three elements: mailxml_id:SubmittingParty, mailxml_id:SubmittingSoftware, and mailxml_id:SubmitterTrackingID.</p>
namespace	http://delivery-tech.org/Specs/mailxml26.2/mailxml_id
annotation	<p>documentation</p> <p>Query request for mail piece customer identifiers.</p>

element **CustomerRelationIdentifyQueryResponse**

<p>diagram</p>	<p>The diagram illustrates the structure of the CustomerRelationIdentifyQueryResponse element. It features a main box labeled CustomerRelationIdentifyQuer... with the description "Response to the Query request for mail piece customer identifiers." This box is connected to a large container labeled attributes. Inside the attributes container, there is a group labeled grp mailxml_id:CRQueryResp... which contains four sub-elements: mailxml_id:MaildatJobID, mailxml_id:MPUID, mailxml_id:SegmentID, and mailxml_id:ComponentID. Below the attributes container, there is a dashed box containing mailxml_id:TrackingID and mailxml_id:SubmitterTrackingID. Further down, there is a choice element (indicated by a circle with a vertical line) that branches into two options: mailxml_id:QueryResults and mailxml_defs:QueryError. The QueryError element has a description: "Error issued when the query data cannot be provided."</p>
namespace	http://delivery-tech.org/Specs/mailxml26.2/mailxml_id
annotation	<p>documentation</p> <p>Response to the Query request for mail piece customer identifiers.</p>

element **CustomerRelationIdentifyUpdateRequest**

diagram	<p>The diagram shows the structure of the CustomerRelationIdentifyUpdateRequest element. It is a container for a sequence of components: <ul style="list-style-type: none"> A group of attributes (grp mailxml_id:SummaryIden...) containing: <ul style="list-style-type: none"> mailxml_id:MaildatJobID mailxml_id:MPUID mailxml_id:SegmentID mailxml_id:ComponentID mailxml_id:LinktoMaildatSumm... mailxml_id:LinktoMaildatSumm... (Group of attributes identifying a mail piece and link to Maildat) A choice element (octagon with dots) containing: <ul style="list-style-type: none"> mailxml_id:SubmittingParty mailxml_id:SubmittingSoftware mailxml_id:SubmitterTrackingID (dashed border) mailxml_id:UpdateCustomerInfo </p>
namespace	http://delivery-tech.org/Specs/mailxml26.2/mailxml_id
annotation	documentation Request to update mail piece customer information.

element **CustomerRelationIdentifyUpdateResponse**

diagram	<p>The diagram shows the structure of the CustomerRelationIdentifyUpdateResponse element. It is a container for a sequence of components: <ul style="list-style-type: none"> A choice element (octagon with dots) containing: <ul style="list-style-type: none"> mailxml_id:TrackingID (dashed border) mailxml_id:SubmitterTrackingID (dashed border) A choice element (octagon with a plus sign) containing: <ul style="list-style-type: none"> mailxml_id:CustomerRelationl... mailxml_id:CustomerRelationl... </p>
namespace	http://delivery-tech.org/Specs/mailxml26.2/mailxml_id
annotation	documentation Response for the update request for mail piece customer information.

element **IncentiveEnrollmentCreateRequest**

diagram	
namespace	http://delivery-tech.org/Specs/mailxml26.2/mailxml_id
annotation	documentation Request to USPS to create Incentive Enrollment information.

element **IncentiveEnrollmentCreateResponse**

diagram	
namespace	http://delivery-tech.org/Specs/mailxml26.2/mailxml_id
annotation	documentation Response to a request to USPS to create Incentive Enrollment information.

element **USPSCRIDCreateValidateRequest**

diagram	<p>The diagram shows the structure of the USPSCRIDCreateValidateRequest element. It is a container element (rectangle with a small square on the left) that contains a sequence of elements (indicated by a dashed line with three dots). The sequence includes: <ul style="list-style-type: none"> mailxml_id:SubmittingParty (solid rectangle with a small square on the right) mailxml_id:SubmittingSoftware (solid rectangle with a small square on the right) mailxml_id:SubmitterTrackingID (dashed rectangle with a small square on the right) mailxml_id:CRIDRequestType (dashed rectangle with a small square on the right) mailxml_id:CRIDEntry (solid rectangle with a small square on the right), which is repeated 1 to infinity times (indicated by a downward arrow and '1..∞' below it). </p>
namespace	http://delivery-tech.org/Specs/mailxml26.2/mailxml_id
annotation	documentation Request to the USPS to create or validate one or more CRIDs.

element **USPSCRIDCreateValidateResponse**

diagram	<p>The diagram shows the structure of the USPSCRIDCreateValidateResponse element. It is a container element (rectangle with a small square on the left) that contains a sequence of elements (indicated by a dashed line with three dots). The sequence includes: <ul style="list-style-type: none"> mailxml_id:TrackingID (dashed rectangle with a small square on the right) mailxml_id:SubmitterTrackingID (dashed rectangle with a small square on the right) A choice element (circle with a vertical line and a small square on the right) containing three options: <ul style="list-style-type: none"> mailxml_id:USPSCRIDCreateRe... (solid rectangle with a small square on the right) mailxml_id:USPSCRIDQueryRe... (solid rectangle with a small square on the right) mailxml_id:USPSCRIDValidateR... (solid rectangle with a small square on the right) </p>
namespace	http://delivery-tech.org/Specs/mailxml26.2/mailxml_id
annotation	documentation Response to a request to the USPS to query, create, or validate one or more CRIDs.

element **USPSMIDCreateValidateRequest**

diagram	<p>The diagram shows the structure of the USPSMIDCreateValidateRequest element. It is a container element (rectangle with a small square on the left) that contains a sequence of elements (indicated by a dashed line with three dots). The sequence includes: <ul style="list-style-type: none"> mailxml_id:SubmittingParty (solid rectangle with a small square on the right) mailxml_id:SubmittingSoftware (solid rectangle with a small square on the right) mailxml_id:SubmitterTrackingID (dashed rectangle with a small square on the right) mailxml_id:MIDRequestType (dashed rectangle with a small square on the right) A choice element (circle with a vertical line and a small square on the right) containing one option: <ul style="list-style-type: none"> mailxml_id:MIDEntry (solid rectangle with a small square on the right), which is repeated 1 to infinity times (indicated by a downward arrow and '1..∞' below it). </p>
namespace	http://delivery-tech.org/Specs/mailxml26.2/mailxml_id

annotation	documentation Request to USPS to create or validate MID information.
------------	---

element **USPSMIDCreateValidateResponse**

diagram	<p>The diagram shows the structure of the USPSMIDCreateValidateResponse element. It is a container element (rectangle with a small square on the left) that contains a sequence of elements (indicated by a dashed line with three dots). The first element is a choice element (octagon with a vertical line and a small square on the left) containing two optional elements (dashed boxes): mailxml_id:TrackingID and mailxml_id:SubmitterTrackingID. The second element is a choice element (octagon with a vertical line and a small square on the left) containing three optional elements (dashed boxes): mailxml_id:USPSMIDCreateRe..., mailxml_id:USPSMIDQueryRes..., and mailxml_id:USPSMIDValidateR....</p>
namespace	http://delivery-tech.org/Specs/mailxml26.2/mailxml_id
annotation	documentation Response to a request to USPS to query, create, or validate MID information.

complexType **CofCCreateAcceptType**

diagram	<p>The diagram shows the structure of the CofCCreateAcceptType complexType. It is a container element (rectangle with a small square on the left) that contains a sequence of elements (indicated by a dashed line with three dots). The first element is a choice element (octagon with a vertical line and a small square on the left) containing two optional elements (dashed boxes): mailxml_id:ReturnInfo and a choice element (octagon with a vertical line and a small square on the left) containing two optional elements (dashed boxes): mailxml_id:ContainerGroup and mailxml_id:MailPieceGroup. The mailxml_id:ContainerGroup and mailxml_id:MailPieceGroup elements have a cardinality of 1..∞. The mailxml_id:ContainerGroup element contains a choice element (octagon with a vertical line and a small square on the left) containing two optional elements (dashed boxes): mailxml_id:UserLicenseCode and mailxml_id:MaildatJobID. The mailxml_id:MailPieceGroup element contains a choice element (octagon with a vertical line and a small square on the left) containing two optional elements (dashed boxes): mailxml_id:CustomerGroupID and mailxml_id:MailingGroupID.</p>
namespace	http://delivery-tech.org/Specs/mailxml26.2/mailxml_id

complexType **CofCCreateRejectType**

diagram	
namespace	http://delivery-tech.org/Specs/mailxml26.2/mailxml_id

complexType **cridCreateResponseType**

diagram	
namespace	http://delivery-tech.org/Specs/mailxml26.2/mailxml_id

complexType **CRIDEntryType**

diagram	
namespace	http://delivery-tech.org/Specs/mailxml26.2/mailxml_id

complexType **cridQueryResponseType**

diagram	
namespace	http://delivery-tech.org/Specs/mailxml26.2/mailxml_id

complexType **cRIDsRequestedType**

diagram	
namespace	http://delivery-tech.org/Specs/mailxml26.2/mailxml_id

complexType **cridValidateResponseType**

diagram	
namespace	http://delivery-tech.org/Specs/mailxml26.2/mailxml_id

complexType **customerIdentityType**

diagram	
namespace	http://delivery-tech.org/Specs/mailxml26.2/mailxml_id

annotation	documentation Structure describibg the customer information
------------	--

complexType **groupContainerIDType**

diagram	
namespace	http://delivery-tech.org/Specs/mailxml26.2/mailxml_id

complexType **IncentiveEnrollmentEntryType**

diagram	
namespace	http://delivery-tech.org/Specs/mailxml26.2/mailxml_id

complexType **legalAcknowledgementBlockCRIDType**

diagram	
namespace	http://delivery-tech.org/Specs/mailxml26.2/mailxml_id

complexType **legalAcknowledgementBlockMIDType**

diagram	
namespace	http://delivery-tech.org/Specs/mailxml26.2/mailxml_id

complexType **legalAcknowledgementBlockMSPSType**

diagram	
namespace	http://delivery-tech.org/Specs/mailxml26.2/mailxml_id

complexType **mailPieceGroupCreateType**

diagram	
namespace	http://delivery-tech.org/Specs/mailxml26.2/mailxml_id

complexType **mailPieceGroupResponseType**

diagram	
namespace	http://delivery-tech.org/Specs/mailxml26.2/mailxml_id

complexType **midCreateResponseType**

diagram	
namespace	http://delivery-tech.org/Specs/mailxml26.2/mailxml_id

complexType **midEntryType**

diagram	
namespace	http://delivery-tech.org/Specs/mailxml26.2/mailxml_id

complexType **midQueryResponseType**

diagram	
namespace	http://delivery-tech.org/Specs/mailxml26.2/mailxml_id

complexType **midValidateResponseType**

diagram	
namespace	http://delivery-tech.org/Specs/mailxml26.2/mailxml_id

simpleType **MIDorCRIDRequestType**

namespace	http://delivery-tech.org/Specs/mailxml26.2/mailxml_id
type	restriction of xs:string